



Content:

- General info and infrastructure
- Groundplan
- Crane
- Truss construction and safety
- Stages
- Video equipment
- Light equipment
- Sound equipment
- H2O supply
- Power supply
- Stagehands and Volunteers
- Dressing room
- Storage
- Parking space



General info and infrastructure:

Hotel Watercage is an aerial show, best performed in an outdoor, green environment, like a park. We need at least 100m² open space, public included. Ground should be approximately even and suitable for the operation of a crane.

Setting, (see also ground plan):

- Main stage with dancers in the center of the performance space. Public is standing around it.
- Crane should reach the center of the main stage (minimum of 25 meters).
- Around the main stage are six beamers for projections.
- There are 4 small stages around the main stage.
- Stage with musicians is on the side of the main stage.
- PA and FOH/production shelter to be placed triangular to the musician's stage and central stage (to decide on venue).

Security and fencing:

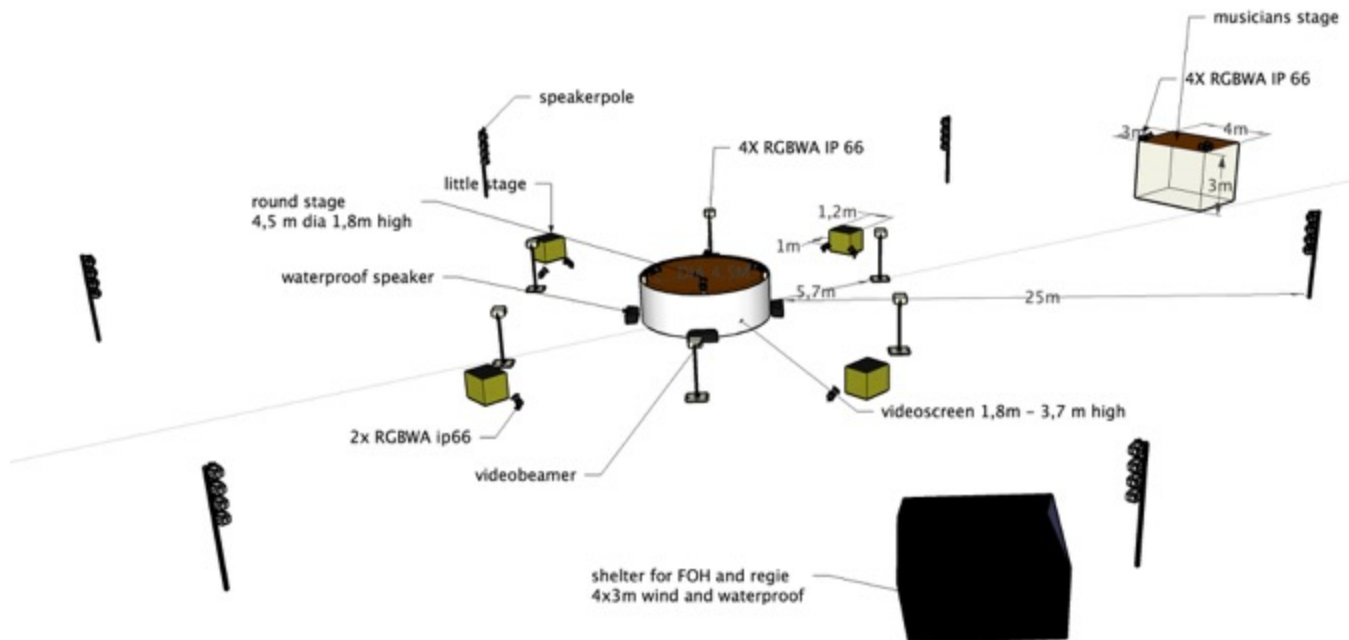
- A circle (with a diameter of 20 meters) made by connecting black (covered) fences (minimum 2 m high) are to be put around the truss lifting-area
- Fencing for separating the audience from the crane
- Fire-safety and 2 fire-extinguishers
- Site needs to be secured during absence of Theater Tol (at night, during meals,...)

Hoisting crane, light, sound, stage and infrastructure are to be provided by the organizer!

The organizer is responsible for arranging all necessary permits. This is very important, because each country has different regulations!



Ground plan:



Crane:

Technical necessities for the hoisting crane.

The crane must be able to turn 360°, minimum of 38 meters height from hook to ground and able to lift 2700kg on a distance of minimum 30 meters far from the center of the hoisting beam. We preferable use a mobile tower crane of 60 meters. Type is 'Spiering mobile tower crane'. A 'heavy' mobile telescopic crane is also possible (100 ton).

Lifting people needs more safety! Pay attention to the safety factors for lifting people!

Because every location is different, a different type of crane may be necessary. For examples and further tech info, see <http://anthonycranes.be/at6/>

The crane must lift a truss, a hexagonal construction of 10 meters diameter. Theater Tol will bring a six-way cable (2 x 3 leg bridles) of 7,5 meters long, each cable certified for lifting 4 ton. With these bridles, the truss can be attached directly to the hook of the crane, together with another object with small stage and stretcher, hanging in the middle of the construction. The total weight of this entire construction, including 10 performers, is 2700 Kg.

During a **technical preview visit** we would like to have a meeting with the crane company, which must provide a **good and careful crane operator**. On the day of the show we will do a full technical rehearsal in daylight with the crane, sound and light should also be ready by then. This is usually done around 2pm, to be confirmed.

Technical Rider 2018 Hotel Watercage



It's important that the operator who does the technical rehearsal during the day is also the one who will do the show at night! The crane operator needs to be present at least 1,5 hr. before the start of the show.

After the last show, the crane can drive away or stay. This is the decision of the organization. The costs of the crane and its operator are for the organizer.

Truss Construction and Safety:

The structure to be lifted is made of a detachable rectangular truss parts and hanging objects, all assembled on location by the Theater Tol crew. It will be transported by truck (dimensions: 750 x 242 x 303) or sea cargo (40ft container).

The truss and all hanging-objects are subjected each year to a safety control by "Vinçotte" in Antwerp (B).

Some countries require safety inspections, which are best held 1 hr. before the first rehearsal. Theater Tol will bring all the certificates of the material used for the show.

All security details are subject to further discussion.

Stages:

The organizer should provide 2 stages + 4 mini stages.

Stage 1: musicians

Stage of 4 meters long, minimum 3 meters deep and 3 meters high.
Railing (1-meter-high) should be provided on the two sides and the back.
With stairs on left or right side of the stage.
Stage can be made of scaffolding material.

Stage 2: dancers

Square stage of 3,5 meters x 3,5 meters and 1,8 meters high. Preferable in truss-structure.
No railing, no stairs, no molton.
Stage can be made of scaffolding material.
Surface should be flat for dancing.

Mini-stages:

4 stages of 1,2 meters x 1 meter.
1-meter high.
Black molton should be attached.



Video equipment:

All video equipment will be provided by Theater Tol.

Power supply at the center stage for six beamers is needed. 3000 W in total + 6 shuko connections.

4 x Manfrotto 078b wind-ups, 50kg versions (to be provided by Organizer / Festival)

Light equipment:

Preferable Theater Tol is bringing their own light material for the stages, if not the organizer takes care of the rent and buildup of all light equipment. (preferred brands are listed)

The organization makes all arrangements for turning off the street lights at the start of the show.

FOLLOW SPOTS (always provided by organizer/festival) (Robert Juliat Aramis 2500)

- 7 Follow spots WITH DIMMER (Light intensity depends on location, Long distance --> 2500W Short Distance 1250W)
- 7 Colour Filters RED: 027 Medium Red
- 7 Colour Filters BLUE: 120 Deep Blue
- 7 Technical Filters Correction: 441 Full C.T. orange

7 Identical follow spots must be provided and staff to build up. All follow spots must be able to make at least a 180° angle pan area and a 75° tilt angle referencing the horizon. This depends on the setting, but normally the truss swings over the audience, the follow spots must be able to follow each hanging object when they approach the back of the location.

All the follow spots must be placed on a riser, minimum 1 meter above the ground. Follow spots may be directly fed from PSU.

Intercom systems (always provided by organizer/festival) (ASL / CLEARCOM / ..)

Each follow spot (7) must be equipped with an intercom belt pack and headset for the operator to listen to instructions given by the lighting controller during the show. 1 belt pack with headset must be available at the console desk for the lighting controller and 1 for the light engineer of TOL. => 9 intercom belt packs with headset

Staff

The organizer has to provide 8 English or French speaking experienced light-operators to handle the follow-spots and the light console during the show. They will be well instructed by Theater Tol and need to be present at the rehearsal. At the day of the show they should be at the site 1,5hrs before the start of the show.

Technical Rider 2018 Hotel Watercage



Work Light (always provided by organizer/festival)

Around the truss area for extra light during break down or evening rehearsals (4 x 2000W flood) on tripod.

Stage Lights (can be brought by TOL for additional fee of 500€/performance day)

Lighting for all Stages should be controlled with faders on a mixer at the production tent.

Stage 1: musicians

- 4 RGBWA LED (Contest ipSPOT12X12six / Briteq PRO BEAMER MK3 OUTDOOR / Nicols parled 1412fcip / or comparable) at least 40°
- Wireless DMX Receiver (Nicols, Briteq 400m open air)

Stage 2: dancers

- 4 RGBWA LED (Contest ipSPOT12x12six / Briteq PRO BEAMER zoom MK2 outdoor / Nicols parled 1418zip / or comparable) at least 40°
- Wireless DMX Receiver (Nicols, Briteq 400m open air)

Mini-stages:

- 8 x RGBWA LED (Briteq ldpcobwash 60tc / Briteq PRO BEAMER MK3 OUTDOOR / Nicols parled 1412fcip / or comparable) at least 90°
- Wireless DMX Receiver (Nicols, Briteq : 400m range open air)

Truss construction:

- 3 x RGBWA LED BATTERY powerd wdmx on board (Contest ipair5x12six or comparable)

FOH / Regie-production shelter

- DMX Transmitter, (Nicols, Briteq : 400m range open air)
- Lighting console suitable for conventional and led : CELCO NAVIGATOR / GRAND MA 1 or 2 / CHAMSYS (or comparable)

Sound equipment:

Preferable Theater Tol is bringing their own sound material for additional fee, if not the organizer should arrange the rental and build up of the sound system (**preferred brands are listed**) and at least 1 English/French speaking sound-technician to assist.

- The organization / festival delivers a decent power supply meaning: 3x32 A 400Volts at 50Hz with two connection units each with at least 12 shuko connectors (1 at location of round stage, 1 at location off regie)

Technical Rider 2018 Hotel Watercage



- The organization / festival provides a wind and waterproofed shelter of at least 4 by 3 meters for regie / foh
- The organization / festival provides 6x wind-up **manfrotto 087b** black for mounting the LBC speakers.

Sound (can be brought by TOL for additional fee of 750€/performance day)

- 24 LBC 3700 **BOSCH** speakers or equivalent mounted on 6 bars to be mounted on wind-ups (equipment of Tol! Not to be rented)
- 4 x **One Systems 212IM** waterproof speaker throw angel 60x50 or equivalent
- Digital mixing table **digico SD11** or equivalent
- 6 wireless microphone systems **SENNHEISER** with flag-antennas and boosters (3 for musicians with **dpa 4099** mic ,1 clip-on mic for violin , and 1 with miniature omni-mic for singer **sennheiser ME3 gold** or equivalent
- 2 in-ear systems **SENNHEISER** with 5x earplugs and 5 x belt packs ,Flag antennas and booster (for musicians, singer and technician)
- 2 amplifiers **BOSCH 100V** for the 24 speakers around the truss
- 2 amplifiers **CROWN XTI 4000** for One Systems speakers
- all necessary cables and multicores for sound system

H2O Supply:

We need one H2O connection point / hydrant and a fire hose from the hydrant to the centre stage (round stage).

Minimum pressure should be between 5 and maximum 8 bar.





Power Supply:

The organizer / festival provides all necessary power supply:

For light, sound and video: 3x380 Volt / 50hz 32 A – 3 electrical distribution panels with each minimum 12 shuko connectors (12 x 220V 16A) equally divided over 3 phases.

- The 1st panel should be placed at the P.A./ production shelter,
- The 2nd panel near the crane, this will be used for work light near the truss or extra charging points for batteries that Theater Tol uses.
- The 3rd panel under the center stage.

For video and light around the mainstage, there should be enough cable to make 2 big circles, each with 8 shuko connectors.

For the 7 follow-spots 3x 380 Volt / 50hz 32A + all necessary cables to the follow-spots

Converters to electrical plug type E or F should be provided when needed.

Converters from 110 volt to 220 – 50Hz volt should be provided when needed.

The organization / festival provides 10 x protection rubber mat on roll 60 cm wide x 25 m long.

Stagehands / Volunteers:

Stagehands

The organizer / festival should provide 4 stagehands if light and sound equipment is provided by Theater Tol.

If equipment is not provided by Tol, the renting company is taking care of all building up.

These stagehands will help building up and breaking down the material of Theater Tol.

Volunteers

The organiser / festival should provide 7 volunteers.

These volunteers are helping during the show. Carrying props, pushing cages. Therefore, these people should be fit and in good condition.

Volunteers should wear black clothing during the show.

Dressing Room:

- A acclimatized dressing room with clean floor (bare feet)
- A space for 16 people to change.
- 1 big mirror (man-size)
- 40 chairs, 5 tables, 3 racks with cloth-hangers
- light
- at least 4 power sockets (220v electricity)

Technical Rider 2018 Hotel Watercage



- Dressing room needs to be safely locked during performance or night
- Beverages (cold and hot) and snacks for 23 people

(If necessary the dressing room can be installed in 2 tents of minimum 5x5 meters, dry floor).

Technical Room and/or Storage:

For storage of TOL material a technical space, dry and safe is needed.
Space should be close to the playing area and a minimum of 10m² surface and lockable.
A room, tent or container is possible.
For charging batteries, used during the show, we need 8 shuko electric sockets in this technical storage and overnight power supply.

Parking Space:

Free and safe parking must be provided for the truck or container close to the location during the entire period of the company's presence.
If the crew is traveling from Belgium by car: 4 free & secure parking spaces for cars are needed.
If parking can't be nearby, shuttle transport should be organized.

Hotel & Catering:

Hotel:

B&B or Hotel with breakfast for 23 persons
From arrival upon departure (late check-out)
Single or Double rooms (twin beds)
With Wi-Fi and free parking spot if Tol travels by car

Catering or per diem:

From arrival upon departure
For 23 persons (approximate ½ of the crew is vegetarian, tbc)
2 full healthy meals / day and night-snack after the performance(s)
Easy access/no waiting time
Drinks (cold and hot) and bottled water permanent available at the dressing rooms and at the building up area